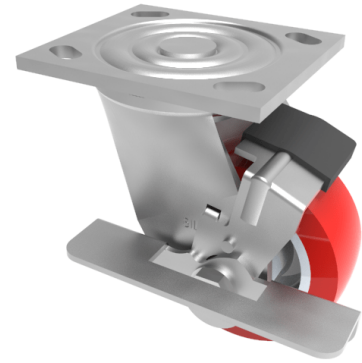


Polyurethane Nylon Plate Swivel Castor Brake 200mm 600kg Load

Product code: BZJ200NPBK/USA

Fabricated swivel castor with a flat plate fixing fitted with a red polyurethane tyre on white nylon centred wheel with plain bore and a side fitting wheel brake. Wheel diameter 200mm, tread width 50mm, overall height 240mm, plate size 115mm x 102mm, hole centres 92mm x 67mm and 76mm x 76mm. Load capacity 600kg.



Diameter (mm)	200
Fixing Option	Plate
Castor Type	Swivel with Wheel Brake
Bearing Type	Plain
Height (mm)	240
Plate Size (mm)	115 x 102
Hole Centres (mm)	76/92 x 76/67
To Suit Fixing Bolt (mm)	10
Wheel Material	Polyurethane on Nylon
Colour / Shore Hardness	Red Polyurethane on Nylon Rim / 96 Shore A
Temperature Resistance	-20 °C TO +70 °C
Top Plate Thickness (mm)	5.5
Fork Thickness (mm)	5.5
Swivel Radius (mm)	154
Load Capacity (kg)	600
Tread (mm)	50