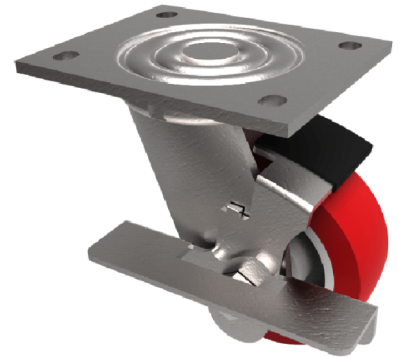


Polyurethane Nylon Plate Swivel Castor Brake 200mm 600kg Load

Product code: BZJ200NPBJBK

Fabricated swivel castor with a top plate fixing fitted with a polyurethane tyred nylon centred wheel with ball bearings and a side fitting wheel brake. Wheel diameter 200mm, tread width 50mm, overall height 240mm, top plate 135mm x 110mm, hole centres 105mm x 80mm. Load capacity 600kg.



Diameter (mm)	200
Fixing Option	Plate
Castor Type	Swivel with Wheel Brake
Bearing Type	Ball
Height (mm)	240
Plate Size (mm)	135 x 110
Hole Centres (mm)	105 x 80
To Suit Fixing Bolt (mm)	10
Wheel Material	Polyurethane on Nylon
Colour / Shore Hardness	Red Polyurethane on Nylon Rim / 96 Shore A
Temperature Resistance	-20 °C TO +70 °C
Top Plate Thickness (mm)	5.5
Fork Thickness (mm)	5.5
Swivel Radius (mm)	154
Load Capacity (kg)	600
Tread (mm)	50