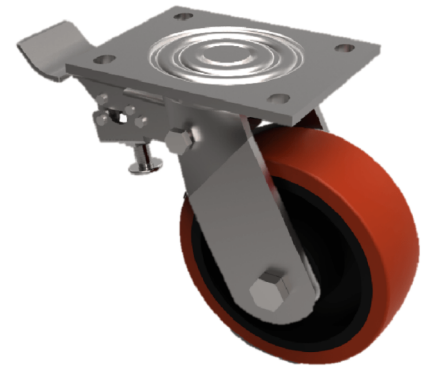


Polyurethane Nylon Plate Swivel Castor Brake 200mm 600kg Load

Product code: BZJ200XPNBJSWB



Fabricated swivel castor with a top plate fixing fitted with a brown polyurethane on black nylon centred wheel with ball bearings with total lock brake. Wheel diameter 200mm, tread width 57mm, overall height 240mm, top plate 135mm x 110mm, hole centres 105mm x 80/75mm. Load capacity 600kg.

Diameter (mm)	200
Fixing Option	Plate
Castor Type	Swivel with Total Lock Brake
Bearing Type	Ball
Height (mm)	240
Plate Size (mm)	135 x 110
Hole Centres (mm)	105 x 80
To Suit Fixing Bolt (mm)	10
Wheel Material	Polyurethane on Nylon
Colour / Shore Hardness	Brown Polyurethane on Nylon Rim / 96 Shore A
Temperature Resistance	-20 °C TO +80 °C
Top Plate Thickness (mm)	5.5
Fork Thickness (mm)	5.5
Swivel Radius (mm)	154
Load Capacity (kg)	600
Tread (mm)	57

BIL GROUP LTD

Porte Marsh Road, Calne, Wiltshire, SN11 9BW

Registered in England No: 2603821

VAT Reg: GB572705729

