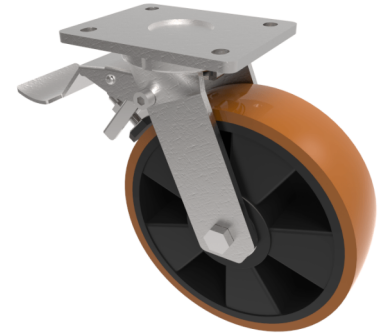


## Polyurethane Nylon Plate Swivel Castor Brake 200mm 600kg Load

**Product code: BZMJ200XPNBJSWB**



Fabricated white zinc ROHS plated swivel castor with a top plate fixing fitted with a brown polyurethane tyred nylon centred wheel with ball bearings and a total lock brake. Wheel diameter 200mm, tread width 57mm, overall height 240mm, top plate 138mm x 110mm, hole centres 105mm x 80mm. Load capacity 600kg. REACH compliant

Diameter (mm)	200
Fixing Option	Plate
Castor Type	Swivel with Total Lock Brake
Bearing Type	Ball
Height (mm)	241
Plate Size (mm)	138 x 110
Hole Centres (mm)	105 x 80/75
To Suit Fixing Bolt (mm)	10
Wheel Material	Polyurethane on Nylon
Colour / Shore Hardness	Brown Polyurethane on Nylon Rim / 96 Shore A
Temperature Resistance	-20 °C TO +80 °C
Top Plate Thickness (mm)	7
Fork Thickness (mm)	6
Swivel Radius (mm)	156
Load Capacity (kg)	600
Tread (mm)	57