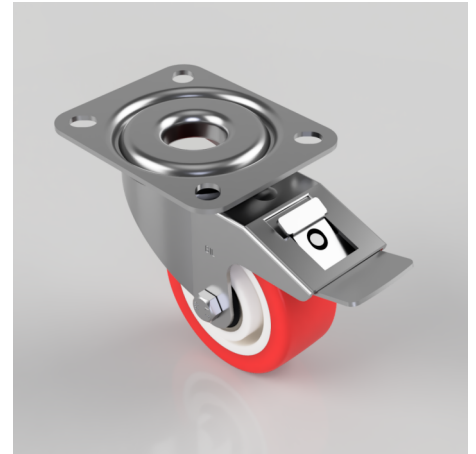


Polyurethane Nylon Plate Swivel Castor Brake 80mm 150kg Load

Product code: BZMM80NPBJSWB

Pressed steel swivel castor with top plate fixing fitted with red polyurethane tyre on white nylon centred wheel with a ball bearing and total lock brake. Wheel diameter 80mm, tread width 33mm, overall height 105mm, top plate 105mm x 85mm, hole centres 80mm x 60mm. Load capacity 150kg.



Diameter (mm)	80
Castor Type	Swivel with Total Lock Brake
Fixing Option	Plate
Height (mm)	105
Wheel Material	Polyurethane on Nylon
Colour / Shore Hardness	Red Polyurethane on Nylon Rim / 96 Shore A
Temperature Resistance	-20 °C TO +70 °C
Bearing Type	Ball
Load Capacity (kg)	150
Tread (mm)	33
Swivel Radius (mm)	111
Plate Size (mm)	105 X 85
Hole Centres (mm)	80 X 60
Top Plate Thickness (mm)	2.5
Fork Thickness (mm)	2
To Suit Fixing Bolt (mm)	8

BIL GROUP LTD

Porte Marsh Road, Calne, Wiltshire, SN11 9BW

Registered in England No: 2603821

VAT Reg: GB572705729

