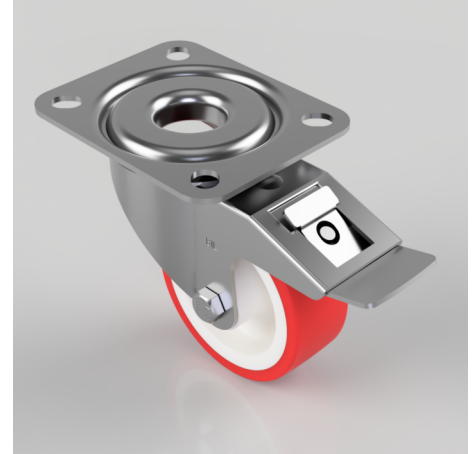


Polyurethane Nylon Plate Swivel Castor Brake 80mm 150kg Load

Product code: BZMM80NPSWB

Pressed steel swivel castor with top plate fixing fitted with a red polyurethane tyre on white nylon centred wheel with plain bore and total lock brake. Wheel diameter 80mm, tread width 30mm, overall height 106mm, top plate 105mm x 85mm, hole centres 80mm x 60mm. Load capacity 150kg.



Diameter (mm)	80
Castor Type	Swivel with Total Lock Brake
Fixing Option	Plate
Height (mm)	105
Wheel Material	Polyurethane on Nylon
Colour / Shore Hardness	Red Polyurethane on Nylon Rim / 96 Shore A
Temperature Resistance	-20 °C TO +70 °C
Bearing Type	Plain
Load Capacity (kg)	150
Tread (mm)	30
Swivel Radius (mm)	111
Plate Size (mm)	105 X 85
Hole Centres (mm)	80 X 60
Top Plate Thickness (mm)	2
Fork Thickness (mm)	2
To Suit Fixing Bolt (mm)	8