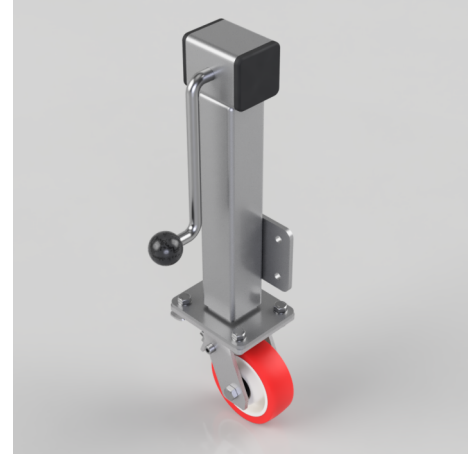


## Polyurethane Nylon Plate Swivel Castor Brake Locking Castor 125mm 350kg Load

**Product code: JAZHS125NPBJSWB**

Side winding jacking unit with maximum lift of 200mm fitted with a Fabricated swivel castor with a top plate fixing fitted with a red polyurethane tyre on a white nylon centred wheel with ball bearings. Wheel diameter 125mm, tread width 40mm, maximum Load for the complete unit is capacity 350kg. Please note Jacking castors are rated on a different principal to other castors and we recommend the total lifted load is divided over just 2 jacking units. for other dimensions please refer to the BIL catalogue or request a drawing. When jacked up to the height please beware of any obstacles as a sudden shock could result in the inner square tube bending around the outer tube. please note BIL do not recommend brakes on jacking castors. **DO NOT OVERWIND** Handle excessively more than what is needed as this will cause the pin in the gearbox to shear. (This is a safety precaution against over loading the unit)



Diameter (mm)	125
Castor Height (mm)	165
Castor Type	Swivel with Total Lock Brake
Swivel Radius (mm)	101
Fixing Option	Plate
Bearing Type	Ball
To Suit Fixing Bolt (mm)	10
Wheel Material	Polyurethane on Nylon
Colour / Shore Hardness	Red Polyurethane on Nylon Rim / 96 Shore A
Temperature Resistance	-20 °C TO +70 °C
Load Capacity (kg)	350
Tread (mm)	40
Height (mm)	572 / 772
Lifting Stroke (mm)	200
Handle Option	Fixed

### BIL GROUP LTD

Porte Marsh Road, Calne, Wiltshire, SN11 9BW

Registered in England No: 2603821

VAT Reg: GB572705729

