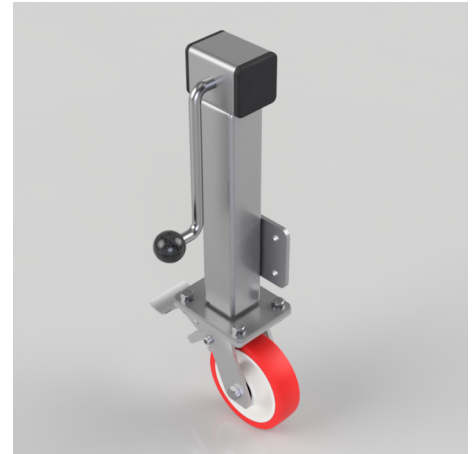


Polyurethane Nylon Plate Swivel Castor Brake Locking Castor 150mm 500kg Load

Product code: JAZHS150NPBJSWB

Side winding jacking unit with maximum lift of 200mm fitted with a fabricated swivel castor with a top plate fixing fitted with a red polyurethane tyre on a white nylon centred wheel with ball bearing bore and a total lock brake. Wheel diameter 150mm, tread width 40mm, maximum Load for the complete unit is capacity 500kg. Please note Jacking castors are rated on a different principal to other castors and we recommend the total lifted load is divided over just 2 jacking units. For other dimensions please refer to the BIL catalogue or request a drawing. When jacked up to the height please be aware of any obstacles as a sudden shock could result in the inner square tube bending around the outer tube. Please note BIL do not recommend brakes on jacking castors. **DO NOT OVERWIND** Handle excessively more than what is needed as this will cause the pin in the gearbox to shear. (This is a safety precaution against over loading the unit)



| | |
|--------------------------|--|
| Diameter (mm) | 150 |
| Castor Height (mm) | 190 |
| Castor Type | Swivel with Total Lock Brake |
| Swivel Radius (mm) | 145 |
| Fixing Option | Plate |
| Bearing Type | Ball |
| To Suit Fixing Bolt (mm) | 10 |
| Wheel Material | Polyurethane on Nylon |
| Colour / Shore Hardness | Red Polyurethane on Nylon Rim / 96 Shore A |
| Temperature Resistance | -20 °C TO +70 °C |
| Load Capacity (kg) | 500 |
| Tread (mm) | 40 |
| Height (mm) | 597 / 797 |
| Lifting Stroke (mm) | 200 |
| Handle Option | Fixed |