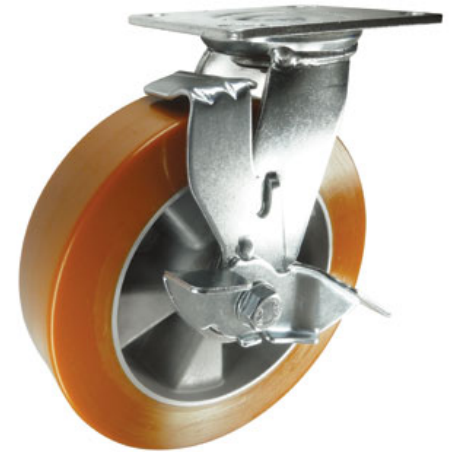


Polyurethane on Aluminium Plate Swivel Castor Brake 125mm 450kg Load

Product code: VSL125APJP05BK

Fabricated steel swivel castor with a top plate fixing fitted with polyurethane on aluminium centred wheel with ball journal bearings and wheel brake. Wheel diameter 125mm, tread width 50mm, overall height 159mm, top plate 130mm x 104mm, hole centres 105mm x 80mm. Load capacity 450kg.



Diameter (mm)	125
Castor Type	Swivel
Fixing Option	Plate
Height (mm)	159
Wheel Material	Polyurethane on Aluminium
Colour / Shore Hardness	Brown Polyurethane on Aluminium Rim / TBC
Temperature Resistance	TBC
Bearing Type	Ball
Load Capacity (kg)	450
Tread width (mm)	50
Swivel Radius (mm)	92.5
Plate Size (mm)	130 x 104
Hole Centres (mm)	105 x 80
Top Plate Thickness (mm)	5
Fork Thickness (mm)	5
To Suit Fixing Bolt (mm)	10
Brand	Varley