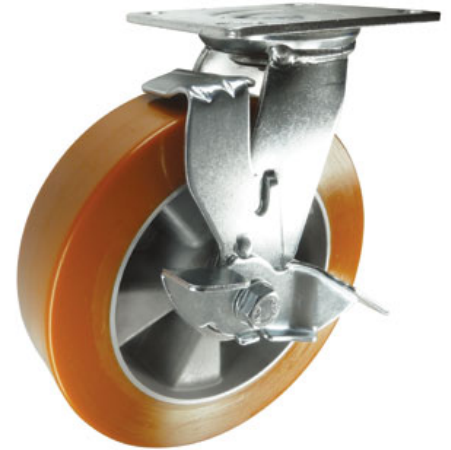


## Polyurethane on Aluminium Plate Swivel Castor Brake 150mm 550kg Load

**Product code: VSL150APJP05BK**

Fabricated steel swivel castor with a top plate fixing fitted with polyurethane on aluminium centred wheel with ball journal bearings and wheel brake. Wheel diameter 150mm, tread width 50mm, overall height 189mm, top plate 130mm x 104mm, hole centres 105mm x 80mm. Load capacity 550kg.



|                          |   |
|--------------------------|---|
| Diameter (mm)            | 150                                       |
| Castor Type              | Swivel                                    |
| Fixing Option            | Plate                                     |
| Height (mm)              | 189                                       |
| Wheel Material           | Polyurethane on Aluminium                 |
| Colour / Shore Hardness  | Brown Polyurethane on Aluminium Rim / TBC |
| Temperature Resistance   | TBC                                       |
| Bearing Type             | Ball                                      |
| Load Capacity (kg)       | 550                                       |
| Tread width (mm)         | 50  |
| Swivel Radius (mm)       | 114                                       |
| Plate Size (mm)          | 130 x 104                                 |
| Hole Centres (mm)        | 105 x 80                                  |
| Top Plate Thickness (mm) | 5   |
| Fork Thickness (mm)      | 5   |
| To Suit Fixing Bolt (mm) | 10  |
| Brand                    | Varley                                    |

### BIL GROUP LTD

Porte Marsh Road, Calne, Wiltshire, SN11 9BW

Registered in England No: 2603821

VAT Reg: GB572705729

