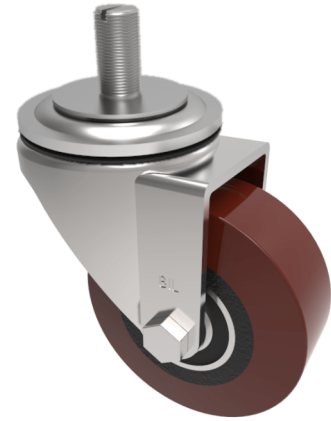


Polyurethane on Cast Iron Stem Swivel Castor 125mm 250kg Load

Product code: BZH125PTBJST

Pressed steel swivel castor with a 16mm x 30mm stem fixing fitted with a brown polyurethane tyre on a cast iron centred wheel with ball bearings. Wheel diameter 125mm, tread width 40mm, overall height 156mm. Load capacity 250kg.



| | |
|--------------------------|--|
| Diameter (mm) | 125 |
| Castor Type | Swivel |
| Fixing Option | Stem |
| Height (mm) | 155 |
| Wheel Material | Polyurethane on Cast Iron |
| Colour / Shore Hardness | Brown Polyurethane on Cast Iron Rim / 94 Shore A |
| Temperature Resistance | -20 °C TO +80 °C |
| Bearing Type | Ball |
| Load Capacity (kg) | 250 |
| Tread (mm) | 40 |
| Swivel Radius (mm) | 104 |
| Head Dia (mm) | 76 |
| To Suit Fixing Bolt (mm) | M16 X 30 |