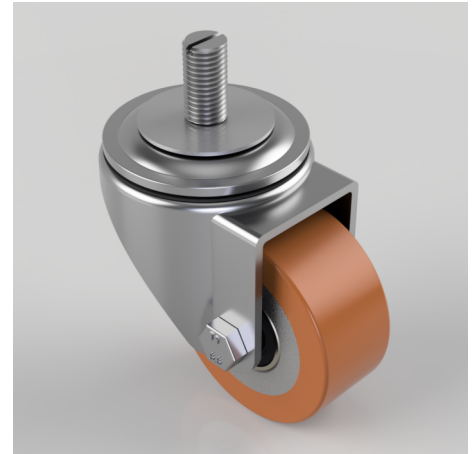


## Polyurethane on Cast Iron Stem Swivel Castor 80mm 250kg Load

**Product code: BZH80PTBJST**

Pressed steel swivel castor fitted with a brown polyurethane on cast iron wheel with a ball bearing and fitted with a 16mm x 30mm threaded stem. Wheel diameter 80mm, tread width 36mm, overall height 106mm. Load capacity 250kg.



Diameter (mm)	80
Castor Type	Swivel
Fixing Option	Stem
Height (mm)	106
Wheel Material	Polyurethane on Cast Iron
Colour / Shore Hardness	Brown Polyurethane on Cast Iron Rim / 94 Shore A
Temperature Resistance	-20 °C TO +80 °C
Bearing Type	Ball
Load Capacity (kg)	250
Tread (mm)	36
Swivel Radius (mm)	78
Head Dia (mm)	76
To Suit Fixing Bolt (mm)	M16 X 30