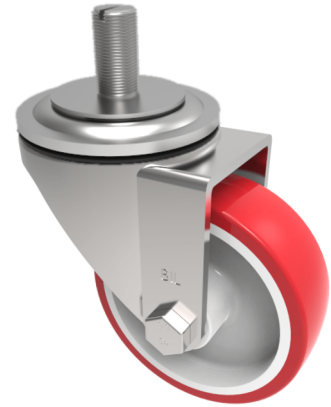


Polyurethane on Nylon Stem Swivel Castor 100mm 250kg Load

Product code: BZH100NPST

Pressed steel swivel castor with a 16mm x 30mm threaded stem fixing fitted with a red polyurethane on white nylon centred wheel with a plain bore. Wheel diameter 100mm, tread width 33mm, overall height 128mm. Load capacity 250kg.



Diameter (mm)	100
Castor Type	Swivel
Fixing Option	Stem
Height (mm)	128
Wheel Material	Polyurethane on Nylon
Colour / Shore Hardness	Red Polyurethane on Nylon Rim / 96 Shore A
Temperature Resistance	-20 °C TO +70 °C
Bearing Type	Plain
Load Capacity (kg)	250
Tread (mm)	34
Swivel Radius (mm)	90
Head Dia (mm)	76
To Suit Fixing Bolt (mm)	M16 X 30