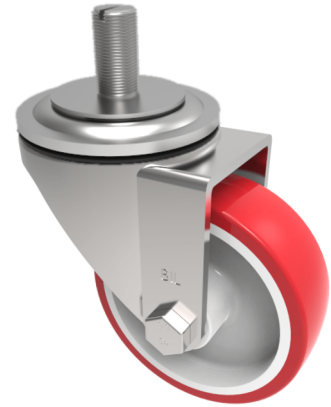


## Polyurethane on Nylon Stem Swivel Castor 125mm 250kg Load

**Product code: BZH125NPST**

Pressed steel swivel castor with a 16mm x 30mm stem fixing fitted with a red polyurethane tyre on white nylon centred wheel with a plain bore. Wheel diameter 125mm, tread width 35mm, overall height 156mm. Load capacity 250kg.



Diameter (mm)	125
Castor Type	Swivel
Fixing Option	Stem
Height (mm)	155
Wheel Material	Polyurethane on Nylon
Colour / Shore Hardness	Red Polyurethane on Nylon Rim / 96 Shore A
Temperature Resistance	-20 °C TO +70 °C
Bearing Type	Plain
Load Capacity (kg)	250
Tread (mm)	35
Swivel Radius (mm)	104
Head Dia (mm)	76
To Suit Fixing Bolt (mm)	M16 X 30