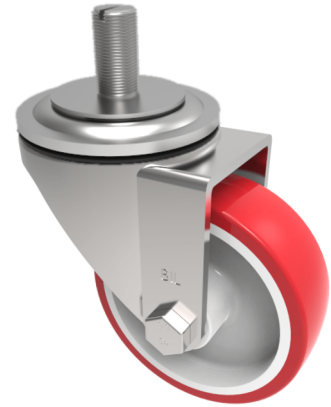


## Polyurethane on Nylon Stem Swivel Castor 80mm 210kg Load

**Product code: BZH80NPBJST**

Pressed steel swivel castor with a 16mm x 30mm threaded stem fitted with a red polyurethane tyre on white nylon centred wheel with a ball bearing. Wheel diameter 80mm, tread width 33mm, overall height 110mm,. Load capacity 210kg.



Diameter (mm)	80
Castor Type	Swivel
Fixing Option	Stem
Height (mm)	110
Wheel Material	Polyurethane on Nylon
Colour / Shore Hardness	Red Polyurethane on Nylon Rim / 96 Shore A
Temperature Resistance	-20 °C TO +70 °C
Bearing Type	Ball
Load Capacity (kg)	210
Tread (mm)	33
Swivel Radius (mm)	78
Head Dia (mm)	76
To Suit Fixing Bolt (mm)	M16 X 30