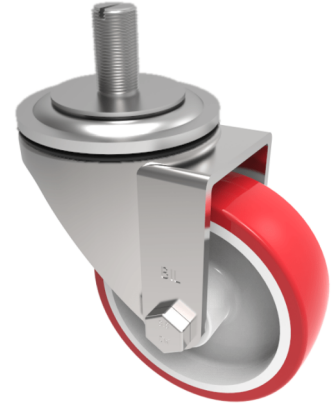


## Polyurethane on Nylon Stem Swivel Castor 80mm 210kg Load

**Product code: BZH80NPST**

Pressed steel swivel castor with 12mm bolt hole fitted with a red polyurethane tyre on white nylon centred wheel with a plain bore fitted with a 16mm x 30mm threaded stem. Wheel diameter 80mm, tread width 33mm, overall height 110mm. Load capacity 210kg.



|                          |  |
|--------------------------|--|
| Diameter (mm)            | 80   |
| Castor Type              | Swivel                                     |
| Fixing Option            | Stem                                       |
| Height (mm)              | 110  |
| Wheel Material           | Polyurethane on Nylon                      |
| Colour / Shore Hardness  | Red Polyurethane on Nylon Rim / 96 Shore A |
| Temperature Resistance   | -20 °C TO +70 °C                           |
| Bearing Type             | Plain                                      |
| Load Capacity (kg)       | 210  |
| Tread (mm)               | 33   |
| Swivel Radius (mm)       | 78   |
| Head Dia (mm)            | 76   |
| To Suit Fixing Bolt (mm) | M16 X 30                                   |