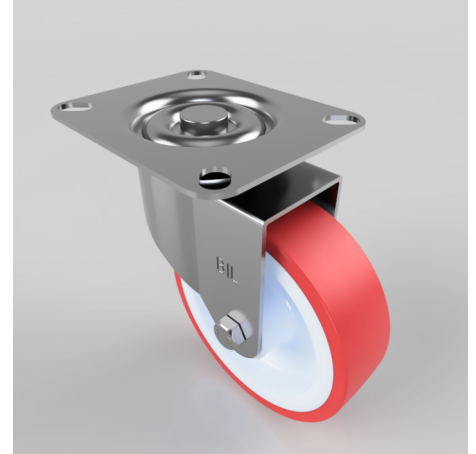


Polyurethane Plate Swivel Castor 100mm 125kg Load

Product code: BZBC100NP

Pressed steel swivel castor with a top plate fixing fitted with a red polyurethane tyre on white nylon centred wheel with a plain bore. Wheel diameter 100mm, tread width 30mm, overall height 126mm, plate size 102mm x 84mm, hole centres 80mm x 60mm. Load capacity 125g.



Diameter (mm)	100
Fixing Option	Plate
Castor Type	Swivel
Plate Size (mm)	102 x 84
Hole Centres (mm)	80 X 60
Height (mm)	126
Bearing Type	Plain
Swivel Radius (mm)	88
Wheel Material	Polyurethane on Nylon
Colour / Shore Hardness	Red Polyurethane on Nylon Rim / 96 Shore A
Top Plate Thickness (mm)	2
Fork Thickness (mm)	2
Temperature Resistance	-20 °C TO +70 °C
To Suit Fixing Bolt (mm)	8
Tread (mm)	30
Load Capacity (kg)	125