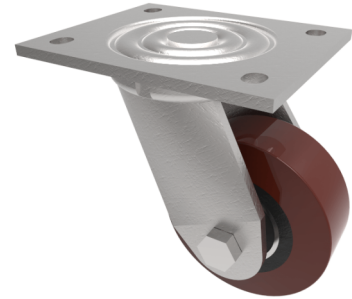


## Polyurethane Plate Swivel Castor 100mm 300kg Load

**Product code: BZMJL100EPTBJ**

Fabricated Zinc Plated Swivel Castor with top plate fitting. 100mm Wheel Diameter, 40mm Tread Width, 140mm Overall Height, 100mm x 85mm Plate Size, 80mm x 60mm Hole Centres. 300kg Load Capacity.



Diameter (mm)	100
Fixing Option	Plate
Castor Type	Swivel
Bearing Type	Ball
Height (mm)	143
Plate Size (mm)	138 x 110
Hole Centres (mm)	105 x 80/75
To Suit Fixing Bolt (mm)	10
Wheel Material	Polyurethane on Cast Iron
Colour / Shore Hardness	Green Polyurethane on Cast Iron Rim / 94 Shore A
Temperature Resistance	-20 °C TO +80 °C
Top Plate Thickness (mm)	7
Fork Thickness (mm)	6
Swivel Radius (mm)	85
Load Capacity (kg)	300
Tread (mm)	40

### BIL GROUP LTD

Porte Marsh Road, Calne, Wiltshire, SN11 9BW

Registered in England No: 2603821

VAT Reg: GB572705729