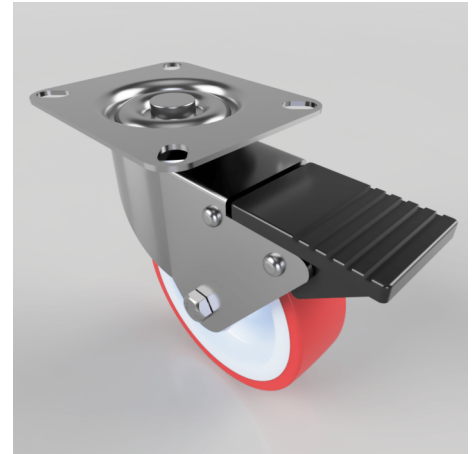


Polyurethane Plate Swivel Castor Brake 100mm 125kg Load

Product code: BZBC100NPSWB

Pressed steel swivel castor with a top plate fixing fitted with a red polyurethane tyre on white nylon centred wheel with a plain bore and total lock brake. Wheel diameter 100mm, tread width 30mm, overall height 126mm, plate size 102mm x 84mm, hole centres 80mm x 60mm. Load capacity 125kg.



| | |
|--------------------------|--|
| Diameter (mm) | 100 |
| Fixing Option | Plate |
| Castor Type | Swivel with Total Lock Brake |
| Plate Size (mm) | 102 x 84 |
| Hole Centres (mm) | 80 X 60 |
| Height (mm) | 126 |
| Bearing Type | Plain |
| Swivel Radius (mm) | 115 |
| Wheel Material | Polyurethane on Nylon |
| Colour / Shore Hardness | Red Polyurethane on Nylon Rim / 96 Shore A |
| Top Plate Thickness (mm) | 2 |
| Fork Thickness (mm) | 2 |
| Temperature Resistance | -20 °C TO +70 °C |
| To Suit Fixing Bolt (mm) | 8 |
| Tread (mm) | 30 |
| Load Capacity (kg) | 125 |