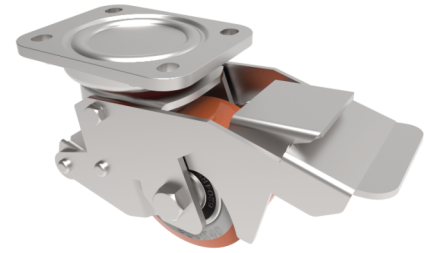


Polyurethane Plate Swivel Castor Brake 75mm 350kg Load

Product code: BZLC75PTBJ



Pressed steel swivel "Lifting Castor" with a top plate fixing fitted with a brown polyurethane wheel with double ball bearing. Wheel diameter 75mm, tread width 40mm, overall height retracted 112mm, extended 120mm, plate size 108mm x 88mm, hole centres 80mm x 60mm. Load capacity 350kg.

Manufactured to Order

Diameter (mm)	75
Castor Type	Swivel
Fixing Option	Plate
Height (mm)	120
Wheel Material	Polyurethane on Cast Iron
Colour / Shore Hardness	Brown Polyurethane on Cast Iron Rim / 94 Shore A
Temperature Resistance	-20 °C TO +80 °C
Bearing Type	Ball
Load Capacity (kg)	350
Tread (mm)	40
Swivel Radius (mm)	148
Plate Size (mm)	108 x 88
Hole Centres (mm)	80 X 60
Top Plate Thickness (mm)	6
Fork Thickness (mm)	3
Retracted Height (mm)	112
To Suit Fixing Bolt (mm)	8