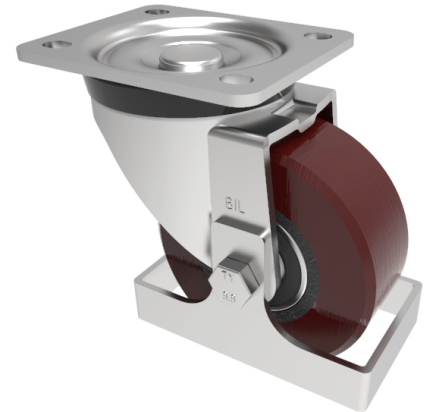


## Polyurethane Plate Swivel Castor Footguard 100mm 300kg load

**Product code: BZH100PTBJFG**

Pressed steel swivel castor with a top plate fixing fitted with a polyurethane tyred wheel on cast iron centre with ball bearings and footguard. Wheel diameter 100mm, tread width 40mm, overall height 128mm, top plate 105mm x 86mm, hole centres 80mm x 60mm. Load capacity 300kg.



Height (mm)	128
Tread (mm)	40
To Suit Fixing Bolt (mm)	8
Bearing Type	Ball
Diameter (mm)	100
Wheel Material	Polyurethane on Cast Iron
Fixing Option	Plate
Castor Type	Swivel
Load Capacity (kg)	300
Colour / Shore Hardness	Brown Polyurethane on Cast Iron Rim / 94 Shore A
Swivel Radius (mm)	90
Plate Size (mm)	105 x 86
Hole Centres (mm)	80 X 60
Fork Thickness (mm)	4
Top Plate Thickness (mm)	4
Temperature Resistance	-20 °C TO +80 °C

### BIL GROUP LTD

Porte Marsh Road, Calne, Wiltshire, SN11 9BW

Registered in England No: 2603821

VAT Reg: GB572705729

