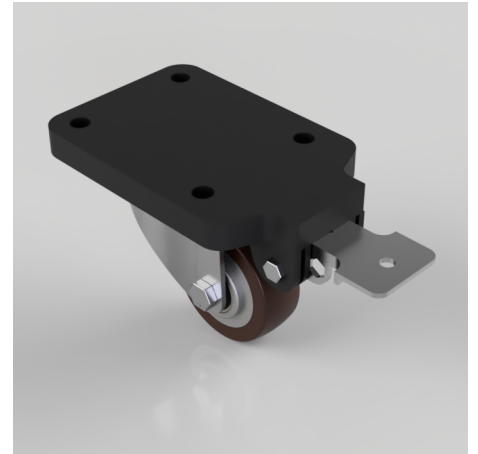


Polyurethane Swivel Brake Plate 80mm 200kg

Product code: BZEH80PABJFPSWB

Pressed steel swivel castor with a top plate fixing fitted with a brown polyurethane tyred aluminium centred wheel with ball bearing with a fixed position total lock brakes. Wheel diameter 80mm, tread width 30mm, overall height 125mm, plate size 180mm x 115mm, hole centres 105mm x 80mm. Load capacity 200kg. (Catalogue SKU BZEH80PABJFPFPSWB)



| | |
|--------------------------|--|
| Fixing Option | Plate |
| Diameter (mm) | 80 |
| Load Capacity (kg) | 200 |
| Castor Type | Swivel with Fixed Position Total Lock Brake |
| Height (mm) | 125 |
| Wheel Material | Polyurethane on Aluminium |
| Colour / Shore Hardness | Brown Polyurethane on Aluminium Rim / 93 Shore A |
| Bearing Type | Ball |
| Tread (mm) | 30 |
| Fork Thickness (mm) | 4 |
| Temperature Resistance | -20 °C TO +70 °C |
| Plate Size (mm) | 180 x 115 |
| Hole Centres (mm) | 105 x 80 |
| Swivel Radius (mm) | 164 |
| Top Plate Thickness (mm) | 18 |
| To Suit Fixing Bolt (mm) | 10 |

BIL GROUP LTD

Porte Marsh Road, Calne, Wiltshire, SN11 9BW

Registered in England No: 2603821

VAT Reg: GB572705729

