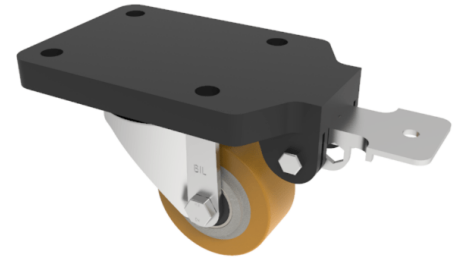


Polyurethane Swivel Braked Plate Castor 100mm 250kg

Product code: BZEH100PABJFPSWB



Pressed steel swivel castor with a top plate fixing fitted with a polyurethane tyred wheel on aluminium centre with ball bearings and a fixed position total lock brake. Wheel diameter 100mm, tread width 40mm, overall height 144mm, top plate 180mm x 115mm, hole centres 105mm x 80mm. Load capacity 250kg.

Fixing Option	Plate
Diameter (mm)	100
Load Capacity (kg)	250
Castor Type	Swivel with Fixed Position Total Lock Brake
Height (mm)	144
Wheel Material	Polyurethane on Aluminium
Colour / Shore Hardness	Brown Polyurethane on Aluminium Rim / 93 Shore A
Bearing Type	Ball
Tread (mm)	40
Fork Thickness (mm)	3
Temperature Resistance	-20 °C TO +70 °C
Plate Size (mm)	180 x 115
Hole Centres (mm)	105 x 80
Swivel Radius (mm)	164
Top Plate Thickness (mm)	18
To Suit Fixing Bolt (mm)	10

BIL GROUP LTD

Porte Marsh Road, Calne, Wiltshire, SN11 9BW

Registered in England No: 2603821

VAT Reg: GB572705729

