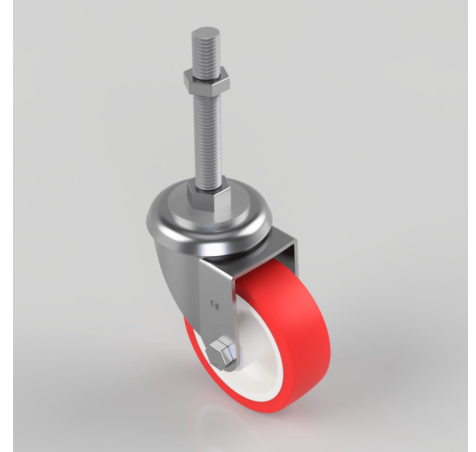


Polyurethane Swivel Castor 100mm 250kg Load

Product code: BZEH100NPBM16X100

Pressed steel swivel castor with with a M16 x100mm adjustable stem fitted with a red polyurethane tyre on white nylon centred wheel with roller bearing. Wheel diameter 100mm, tread width 33mm, overall height 128mm. Load capacity 250kg.



Bearing Type	Roller
Fixing Option	Bolt Hole, Stem
Height (mm)	128
Castor Material	Zinc plated
Castor Type	Swivel
Swivel Radius (mm)	90
Load Capacity (kg)	250
Thread Size	M16 x100mm
Tread (mm)	33
Diameter (mm)	100
Wheel Material	Polyurethane on Nylon
Colour / Shore Hardness	Red Polyurethane on Nylon Rim / 96 Shore A
Fork Thickness (mm)	3
Temperature Resistance	-20 °C TO +70 °C
Head Dia (mm)	76