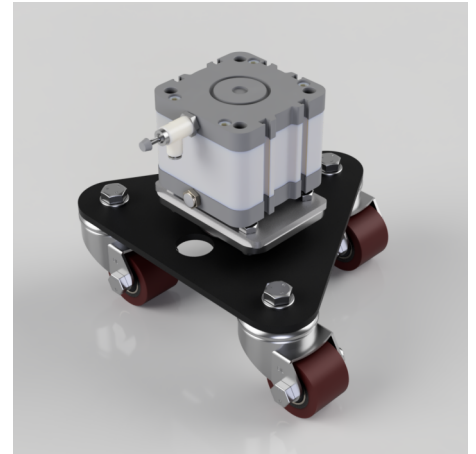


Polyurethane Swivel Castor Ezeelift Lifting System 750kg Load

Product code: EZK50PTBJ

Ezeelift Pneumatic Lifting System including 4 x 50mm Triple Swivel cylinder skates, Flow controls, Manifold, Operating Switch, Co2 Regulator and 25mtrs of tubing. Height retracted 194mm, Height extended 219mm, Load capacity 750kg.



Wheel Material	Polyurethane on Cast Iron
Fixing Option	Direct to Cylinder fixing
Castor Type	Swivel
Diameter (mm)	50
Load Capacity (kg)	750
Bearing Type	Ball
To Suit Fixing Bolt (mm)	10
Height (mm)	194, 219
Tread (mm)	35
Plate Size (mm)	95.5 x 95.5
Colour / Shore Hardness	Brown Polyurethane on Cast Iron Rim / 94 Shore A
Swivel Radius (mm)	180
Temperature Resistance	-20 °C TO +80 °C

BIL GROUP LTD

Porte Marsh Road, Calne, Wiltshire, SN11 9BW

Registered in England No: 2603821

VAT Reg: GB572705729

