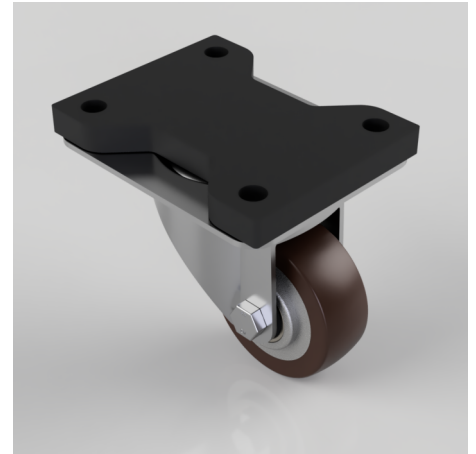


Polyurethane Swivel Plate Castor 80mm 200kg

Product code: BZEH80PABJFP

Pressed steel swivel castor with a top plate fixing fitted with a brown polyurethane tyred aluminium centred wheel with ball bearing. Wheel diameter 80mm, tread width 30mm, overall height 124mm, plate size 135mm x 105mm, hole centres 105mm x 80mm. Load capacity 200kg.



Fixing Option	Plate
Diameter (mm)	80
Load Capacity (kg)	200
Castor Type	Swivel
Height (mm)	124
Wheel Material	Polyurethane on Aluminium
Colour / Shore Hardness	Brown Polyurethane on Aluminium Rim / 93 Shore A
Bearing Type	Ball
Tread (mm)	30
Fork Thickness (mm)	3.5
Temperature Resistance	-20 °C TO +70 °C
Plate Size (mm)	135 x 105
Hole Centres (mm)	105 x 80
Swivel Radius (mm)	78
Top Plate Thickness (mm)	14
To Suit Fixing Bolt (mm)	10

BIL GROUP LTD

Porte Marsh Road, Calne, Wiltshire, SN11 9BW

Registered in England No: 2603821

VAT Reg: GB572705729

