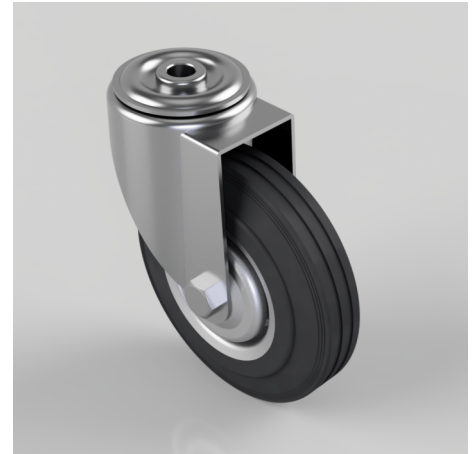


Pressed Steel Bolt Hole Swivel Castor 125mm 100kg Load

Product code: 125RMBBH12

Pressed steel swivel castor with a bolt hole fixing fitted with black rubber tyre on pressed steel centred wheel with a roller bearing bore. Wheel diameter 125mm, tread width 33mm, overall height 153mm, bolt hole 12mm. Load capacity 100kg.



Diameter (mm)	125
Fixing Option	Bolt Hole
Castor Type	Swivel
Height (mm)	153
Bearing Type	Roller
Wheel Material	Rubber on Steel
To Suit Fixing Bolt (mm)	12
Tread (mm)	33
Load Capacity (kg)	100
Swivel Radius (mm)	100
Colour / Shore Hardness	Black Rubber on Steel Rim / 85 Shore A
Fork Thickness (mm)	2
Temperature Resistance	-20 °C TO +60 °C