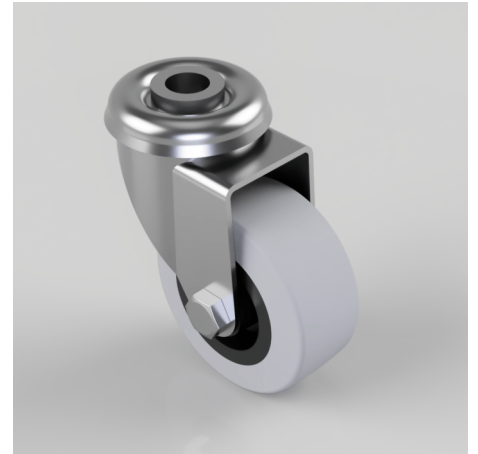


Pressed Steel Bolt Hole Swivel Castor 50mm 38kg Load

Product code: 50TPRBH10

Pressed steel swivel castor with a bolt hole fixing fitted with grey thermoplastic rubber tyre on grey polypropylene centred wheel with a plain bore. Wheel diameter 50mm, tread width 22mm, overall height 73mm, bolt hole 10mm. Load capacity 38kg.



Diameter (mm)	50
Fixing Option	Bolt Hole
Castor Type	Swivel
Height (mm)	73
Bearing Type	Plain
Wheel Material	Rubber on Polypropylene
To Suit Fixing Bolt (mm)	10
Tread (mm)	22
Load Capacity (kg)	38
Swivel Radius (mm)	48
Colour / Shore Hardness	Grey Rubber on Polypropylene Rim / 87 Shore A
Fork Thickness (mm)	1.5
Temperature Resistance	-10 °C TO +50 °C
Head Dia (mm)	40