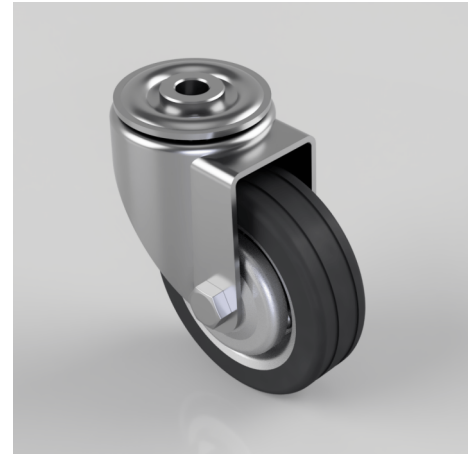


## Pressed Steel Bolt Hole Swivel Castor 75mm 40kg Load

**Product code: 75RMBBH10**

Pressed steel swivel castor with a bolt hole fixing fitted with black rubber tyre on pressed steel centred wheel with a roller bearing Bore. Wheel diameter 75mm, tread width 22mm, overall height 95mm, bolt hole 10mm. Load capacity 40kg.



Diameter (mm)	75
Fixing Option	Bolt Hole
Castor Type	Swivel
Height (mm)	95
Bearing Type	Roller
Wheel Material	Rubber on Steel
To Suit Fixing Bolt (mm)	10
Tread (mm)	22
Load Capacity (kg)	40
Swivel Radius (mm)	65
Colour / Shore Hardness	Black Rubber on Steel Rim / 85 Shore A
Fork Thickness (mm)	2
Temperature Resistance	-20 °C TO +60 °C
Head Dia (mm)	48

### BIL GROUP LTD

Porte Marsh Road, Calne, Wiltshire, SN11 9BW

Registered in England No: 2603821

VAT Reg: GB572705729

