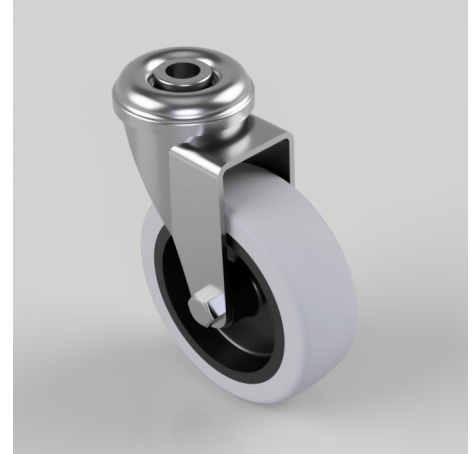


Pressed Steel Bolt Hole Swivel Castor 75mm 55kg Load

Product code: 75TPRBH10

Pressed steel swivel castor with a bolt hole fixing fitted with grey thermoplastic rubber tyre on grey polypropylene centred wheel with a plain bore. Wheel diameter 75mm, tread width 24.5mm, overall height 102mm, bolt hole M10. Load capacity 55kg.



Diameter (mm)	75
Fixing Option	Bolt Hole
Castor Type	Swivel
Height (mm)	102
Bearing Type	Plain
Wheel Material	Rubber on Polypropylene
To Suit Fixing Bolt (mm)	10
Tread (mm)	24.5
Load Capacity (kg)	55
Swivel Radius (mm)	63 Swivel / 79 Braked
Colour / Shore Hardness	Grey Rubber on Polypropylene Rim / 87 Shore A
Fork Thickness (mm)	2
Temperature Resistance	-10 °C TO +50 °C
Head Dia (mm)	48