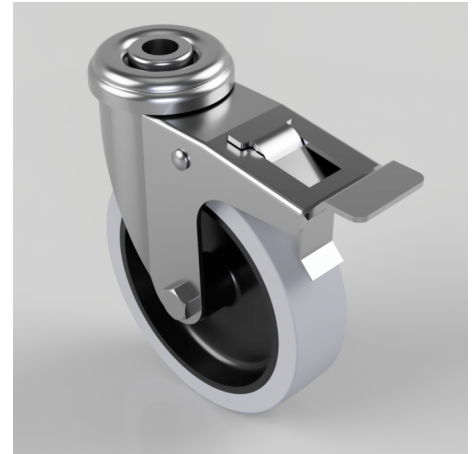


Pressed Steel Bolt Hole Swivel Castor Brake 100mm 70kg Load

Product code: 100TPRBH12SWB

Pressed steel swivel castor with a bolt hole fixing fitted with grey thermoplastic rubber tyre on grey polypropylene centred wheel with a Plain Bore and total lock brake. Wheel diameter 100mm, tread width 26mm, overall height 132mm, bolt hole 12mm. Load capacity 70kg.



Diameter (mm)	100
Fixing Option	Bolt Hole
Castor Type	Swivel with Total Lock Brake
Height (mm)	132
Bearing Type	Plain
Wheel Material	Rubber on Polypropylene
To Suit Fixing Bolt (mm)	12
Tread (mm)	26
Load Capacity (kg)	70
Swivel Radius (mm)	75 Swivel / 102 Braked
Colour / Shore Hardness	Grey Rubber on Polypropylene Rim / 87 Shore A
Fork Thickness (mm)	2
Temperature Resistance	-10 °C TO +50 °C
Head Dia (mm)	50