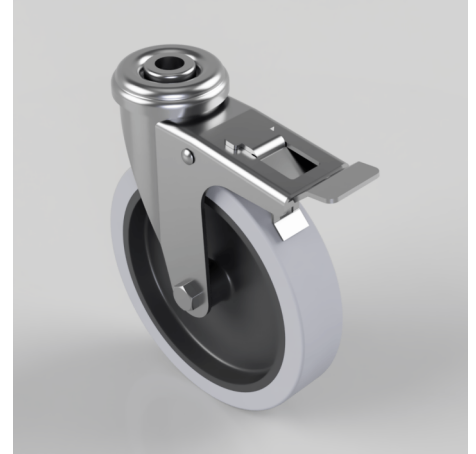


Pressed Steel Bolt Hole Swivel Castor Brake 125mm 80kg Load

Product code: 125TPRBH12SWB

Pressed steel swivel castor with a bolt hole fixing fitted with grey thermoplastic rubber tyre on grey polypropylene centred wheel with a plain bore and total lock brake. Wheel diameter 125mm, tread width 26mm, overall height 159mm, bolt hole 12mm. Load capacity 80kg.



Diameter (mm)	125
Fixing Option	Bolt Hole
Castor Type	Swivel with Total Lock Brake
Height (mm)	159
Bearing Type	Plain
Wheel Material	Rubber on Polypropylene
To Suit Fixing Bolt (mm)	12
Tread (mm)	26
Load Capacity (kg)	80
Swivel Radius (mm)	88 Swivel / 104 Braked
Colour / Shore Hardness	Grey Rubber on Polypropylene Rim / 87 Shore A
Fork Thickness (mm)	2
Temperature Resistance	-10 °C TO +50 °C
Head Dia (mm)	50