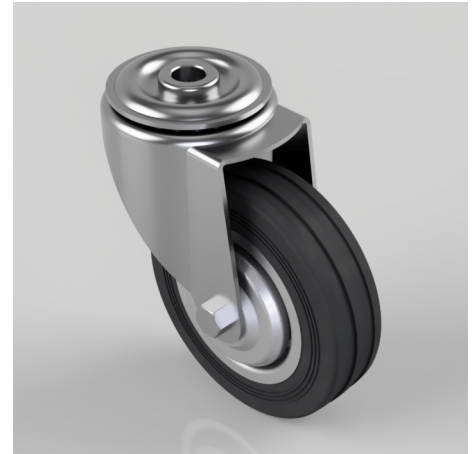


## Pressed Steel Swivel Castor 100mm 60kg Load

**Product code: 100RMBBH12**

Pressed steel swivel castor with a bolt hole fixing fitted with black rubber tyre on pressed steel centred wheel with a roller bearing bore. Wheel diameter 100mm, tread width 26mm, overall height 128mm, bolt hole 12mm. Load capacity 60kg.



Diameter (mm)	100
Castor Type	Swivel
Fixing Option	Bolt Hole
Height (mm)	128
Wheel Material	Rubber on Steel
Bearing Type	Roller
Load Capacity (kg)	60
Tread (mm)	26
Swivel Radius (mm)	87 Swivel / 118 Braked
Colour / Shore Hardness	Black Rubber on Steel Rim / 85 Shore A
Fork Thickness (mm)	2
Temperature Resistance	-20 °C TO +60 °C
To Suit Fixing Bolt (mm)	12
Head Dia (mm)	60