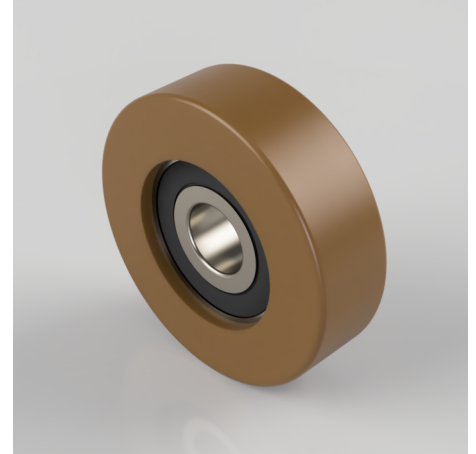


Printhopan 40mm Ball Bearing Guide Roller 90kg Load

Product code: WUDP-040-020-010-Z

POA Printhopan guide roller on a steel centre with ball bearings. Wheel diameter 40mm, tread width 20mm, bore diameter 10mm, load capacity 90kg ****MANUFACTURED TO ORDER****



Diameter (mm)	40
Tread (mm)	20
Bore Size (mm)	10
Load Capacity (kg)	90
Wheel Material	Printhopan
Colour / Shore Hardness	Printhopan / 59 Shore D
Temperature Resistance	-40 °C to +80 °C

BIL GROUP LTD

Porte Marsh Road, Calne, Wiltshire, SN11 9BW

Registered in England No: 2603821

VAT Reg: GB572705729

