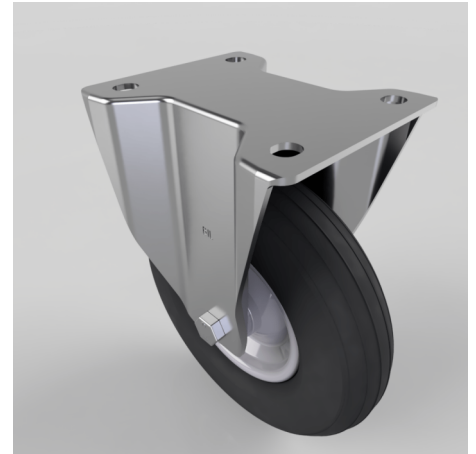


Puncture Proof Polyurethane Plate Fixed Castor 200mm 75kg Load

Product code: BZPCF200MPUB

Pressed steel fixed castor with a top plate fixing fitted with a black puncture proof steel disc centred wheel with a roller bearing. Wheel diameter 200mm, tread width 50mm, overall height 236mm, top plate 135mm x 110mm, hole centres 105mm x 80/75mm. Load capacity 75kg.



| | |
|--------------------------|--------------------------------------------------|
| Diameter (mm) | 200 |
| Castor Type | Fixed |
| Fixing Option | Plate |
| Plate Size (mm) | 135 x 110 |
| Height (mm) | 238 |
| Hole Centres (mm) | 105 x 80/75 |
| Tread (mm) | 44 |
| Temperature Resistance | -10 °C TO +60 °C |
| To Suit Fixing Bolt (mm) | 10 |
| Bearing Type | Roller |
| Wheel Material | Puncture Proof Wheels |
| Load Capacity (kg) | 75 |
| Colour / Shore Hardness | Black Puncture Proof Tyre on Steel Rims / Low PU |
| Top Plate Thickness (mm) | 4 |
| Fork Thickness (mm) | 3 |