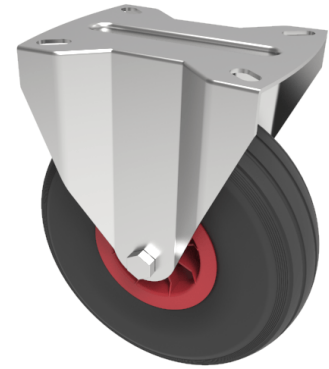


Puncture Proof Polyurethane Plate Fixed Castor 260mm 100kg Load

Product code: BZPCF260PPUB/LITE

Pressed steel fixed castor with a flat plate fixing fitted with a black puncture proof ribbed pattern tyre on red polypropylene centred wheel with a roller bearing. Wheel diameter 260mm, tread width 75mm, overall height 307mm, plate size 200mm x 160mm, hole centres 150mm x 115mm, Load capacity 100kg.



Diameter (mm)	260
Castor Type	Fixed
Fixing Option	Plate
Plate Size (mm)	200 X 160
Height (mm)	307
Hole Centres (mm)	150 x 115
Tread (mm)	85
Temperature Resistance	-10 °C TO +60 °C
To Suit Fixing Bolt (mm)	14
Bearing Type	Roller
Wheel Material	Puncture Proof Wheels
Load Capacity (kg)	100
Colour / Shore Hardness	Black Puncture Proof Tyre on Polypropylene Rims / Low PU
Top Plate Thickness (mm)	4
Fork Thickness (mm)	3