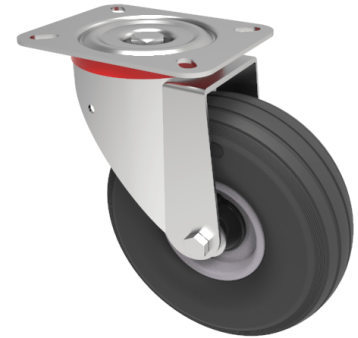


## Puncture Proof Polyurethane Plate Swivel Castor 260mm 150kg Load

**Product code: BZPC260MPUB**

Pressed steel swivel castor with a top plate fixing fitted with a black ribbed pattern puncture proof tyre on a pressed steel centre with roller bearings. Wheel diameter 260mm, tread width 85mm, overall height 302mm, top plate 200mm x 160mm, hole centres 150mm x 115mm. Load capacity 150kg.



Diameter (mm)	260
Castor Type	Swivel
Fixing Option	Plate
Plate Size (mm)	200 X 160
Height (mm)	307
Hole Centres (mm)	150 x 115
Swivel Radius (mm)	215
Tread (mm)	85
Temperature Resistance	-10 °C TO +60 °C
To Suit Fixing Bolt (mm)	14
Bearing Type	Roller
Wheel Material	Puncture Proof Wheels
Load Capacity (kg)	150
Colour / Shore Hardness	Black Puncture Proof Tyre on Steel Rims / High PU
Top Plate Thickness (mm)	4
Fork Thickness (mm)	3