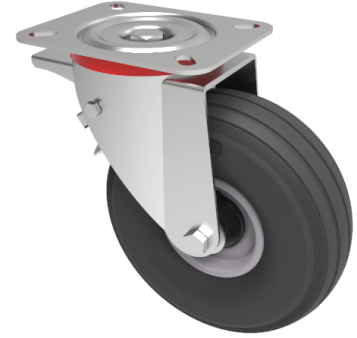


## Puncture Proof Polyurethane Plate Swivel Castor Brake 200mm 75kg Load

**Product code: BZPC200MPUBSWB**

Pressed steel fixed castor with a top plate fixing fitted with a black puncture proof steel disc centred wheel with a roller bearing and a total lock brake. Wheel diameter 200mm, tread width 50mm, overall height 236mm, top plate 135mm x 110mm, hole centres 105mm x 80/75mm. Load capacity 75kg.



Diameter (mm)	200
Castor Type	Swivel with Total Lock Brake
Fixing Option	Plate
Plate Size (mm)	135 x 110
Height (mm)	238
Hole Centres (mm)	105 x 80/75
Swivel Radius (mm)	215
Tread (mm)	44
Temperature Resistance	-10 °C TO +60 °C
To Suit Fixing Bolt (mm)	10
Bearing Type	Roller
Wheel Material	Puncture Proof Wheels
Load Capacity (kg)	75
Colour / Shore Hardness	Black Puncture Proof Tyre on Steel Rims / Low PU
Top Plate Thickness (mm)	4
Fork Thickness (mm)	3

### BIL GROUP LTD

Porte Marsh Road, Calne, Wiltshire, SN11 9BW

Registered in England No: 2603821

VAT Reg: GB572705729

