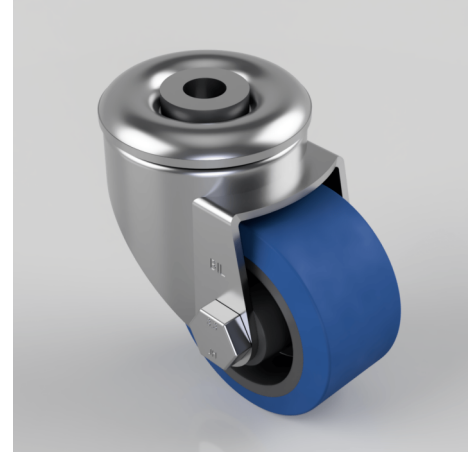


Rubber Bolt Hole Swivel Castor 65mm 100kg Load

Product code: BZLR65SRNBH12

Pressed steel swivel castor with a 12mm bolt hole fitted with a 65 Shore A blue elastic rubber wheel, nylon centre with plain bore. Wheel diameter 63mm, tread width 35mm, overall height 87mm, Load capacity 100kg.



Fixing Option	Bolt Hole
Castor Type	Swivel
Load Capacity (kg)	100
Wheel Material	Rubber on Nylon
Diameter (mm)	65
Bearing Type	Plain
Tread (mm)	35
Height (mm)	87
Swivel Radius (mm)	64
Colour / Shore Hardness	Blue Elastic Rubber on Nylon Rim / 65 Shore A
Fork Thickness (mm)	2.5
Fixing Bolt (mm)	12
Head Dia (mm)	60
Temperature Resistance	-30 °C TO +80 °C