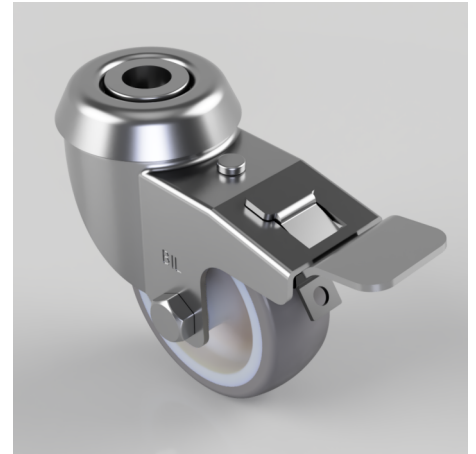


## Rubber Bolt Hole Swivel Castor Brake 50mm 40kg

**Product code: BZD50TPRBH10SWB**

Pressed steel swivel castor with a 10mm bolt hole fitted with grey thermoplastic rubber tyred on grey polypropylene centred wheel with a Plain Bore with total lock brake. Wheel diameter 50mm, tread width 20mm, overall height 68mm, Load capacity 40kg.



Diameter (mm)	50
Fixing Option	Bolt Hole
Castor Type	Swivel with Total Lock Brake
Head Dia (mm)	40
Height (mm)	68
Bearing Type	Plain
Swivel Radius (mm)	73
Wheel Material	Rubber on Polypropylene
Colour / Shore Hardness	Grey Rubber on Polypropylene Rim / 87 Shore A
Fork Thickness (mm)	1.5
Temperature Resistance	-15 °C TO +45 °C
To Suit Fixing Bolt (mm)	10
Tread (mm)	18
Load Capacity (kg)	40