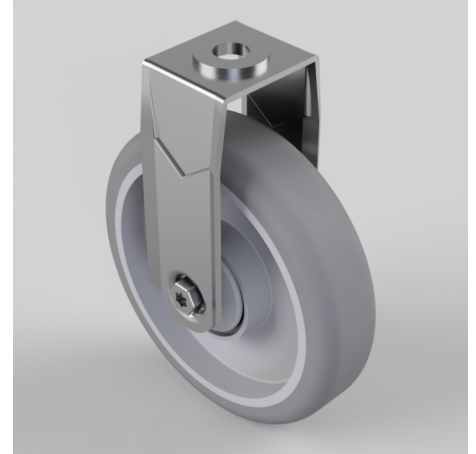


Rubber Fixed Castor Bolt Hole 100mm 70kg

Product code: BZRAF100GRBJBH10

Pressed steel swivel castor with a 10mm bolt hole fitted with a grey thermoplastic rubber tyre on polypropylene centred wheel with a ball bearing and caps. Wheel diameter 100mm, tread width 24mm, overall height 124mm with a Load capacity 70kg.

****MANUFACTURED TO ORDER****



Diameter (mm)	100
Fixing Option	Bolt Hole
Castor Type	Fixed
Head Dia (mm)	21
Height (mm)	124
Bearing Type	Ball
Wheel Material	Rubber on Polypropylene
Colour / Shore Hardness	Grey Rubber on Polypropylene Rim / 82 Shore A
Fork Thickness (mm)	1.8
Temperature Resistance	-15 °C TO +80 °C
To Suit Fixing Bolt (mm)	10
Tread (mm)	24
Load Capacity (kg)	70

BIL GROUP LTD

Porte Marsh Road, Calne, Wiltshire, SN11 9BW

Registered in England No: 2603821

VAT Reg: GB572705729

