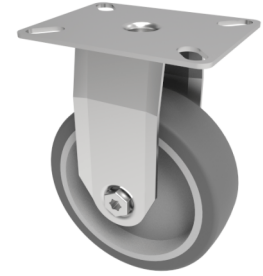


Rubber Fixed Castor Plate 125mm 100kg

Product code: SSMF125GR



Stainless steel fixed castor with a top plate fixing fitted with a grey thermoplastic rubber tyre on polypropylene centred wheel with Plain Bore. Wheel diameter 125mm, tread width 32mm, overall height 156mm, top plate 90mm x 70mm, hole centres 75mm x 56mm or 64mm x 44mm. Load capacity 100kg.

Diameter (mm)	125
Fixing Option	Plate
Castor Type	Fixed
Height (mm)	156
Wheel Material	Rubber on Polypropylene
Colour / Shore Hardness	Grey Rubber on Polypropylene Rim / 87 Shore A
Bearing Type	Plain
Tread (mm)	32
Fork Thickness (mm)	2
To Suit Fixing Bolt (mm)	8
Load Capacity (kg)	100
Temperature Resistance	-15 °C TO +80 °C
Plate Size (mm)	90 x 70
Hole Centres (mm)	75/64 x 56/44
Top Plate Thickness (mm)	2

BIL GROUP LTD

Porte Marsh Road, Calne, Wiltshire, SN11 9BW

Registered in England No: 2603821

VAT Reg: GB572705729

