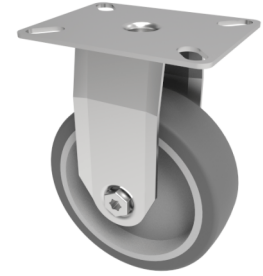


## Rubber Fixed Castor Plate 150mm 100kg

**Product code: SSMF150GR**



Grade 304 Pressed stainless steel fixed castor with a top plate fixing fitted with a grey thermoplastic rubber tyre on polypropylene centred wheel with plain bore. Wheel diameter 150mm, tread width 32mm, overall height 182mm, top plate 90mm x 70mm, hole centres 75mm x 56mm or 64mm x 44mm. Load capacity 100kg. **\*\*MANUFACTURED TO ORDER\*\***

Diameter (mm)	150
Fixing Option	Plate
Castor Type	Fixed
Height (mm)	181
Wheel Material	Rubber on Polypropylene
Colour / Shore Hardness	Grey Rubber on Polypropylene Rim / 87 Shore A
Bearing Type	Plain
Tread (mm)	32
Fork Thickness (mm)	2
To Suit Fixing Bolt (mm)	8
Load Capacity (kg)	100
Temperature Resistance	-15 °C TO +80 °C
Plate Size (mm)	90 x 70
Hole Centres (mm)	75/64 x 56/44
Top Plate Thickness (mm)	2

## BIL GROUP LTD

Porte Marsh Road, Calne, Wiltshire, SN11 9BW

Registered in England No: 2603821

VAT Reg: GB572705729

