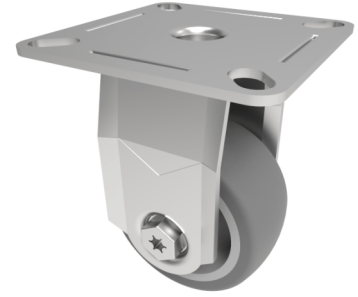


## Rubber Fixed Castor Plate 50mm 50kg

**Product code: BZRAF50GR**



Pressed steel fixed swivel castor with a flat plate fitted with a grey thermoplastic rubber tyre on polypropylene centred wheel with a plain bore. Wheel diameter 50mm, tread width 24mm, overall height 74mm plate size 60mm x 60mm, hole centres 49mm x 49mm or 43mm x 43mm with a Load capacity 50kg.

Diameter (mm)	50
Fixing Option	Plate
Castor Type	Fixed
Plate Size (mm)	60 x 60
Hole Centres (mm)	42/49 x 42/49
Height (mm)	74
Bearing Type	Plain
Wheel Material	Rubber on Polypropylene
Colour / Shore Hardness	Grey Rubber on Polypropylene Rim / 82 Shore A
Top Plate Thickness (mm)	1.8
Fork Thickness (mm)	1.8
Temperature Resistance	-15 °C TO +80 °C
To Suit Fixing Bolt (mm)	6
Tread (mm)	24
Load Capacity (kg)	50

## BIL GROUP LTD

Porte Marsh Road, Calne, Wiltshire, SN11 9BW

Registered in England No: 2603821

VAT Reg: GB572705729

