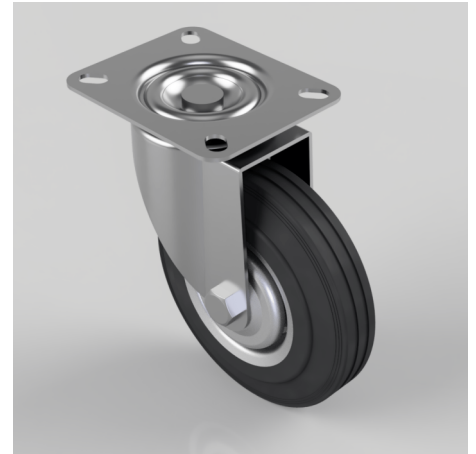


Pressed Steel Swivel Castor 125mm 100kg Load

Product code: 125RMB

Pressed steel swivel castor with a top plate fixing fitted with black rubber tyre on pressed steel centred wheel with a roller bearing Bore. Wheel diameter 125mm, tread width 33mm, overall height 153mm, top plate 102mm x 85mm, hole centres 80mm x 60mm. Load capacity 100kg.



Diameter (mm)	125
Castor Type	Swivel
Fixing Option	Plate
Height (mm)	153
Wheel Material	Rubber on Steel
Bearing Type	Roller
Load Capacity (kg)	100
Tread (mm)	33
Plate Size (mm)	102 x 85
Hole Centres (mm)	80 X 60
Swivel Radius (mm)	100
Colour / Shore Hardness	Black Rubber on Steel Rim / 85 Shore A
Fork Thickness (mm)	2
Temperature Resistance	-20 °C TO +60 °C
To Suit Fixing Bolt (mm)	8
Top Plate Thickness (mm)	2

BIL GROUP LTD

Porte Marsh Road, Calne, Wiltshire, SN11 9BW

Registered in England No: 2603821

VAT Reg: GB572705729

