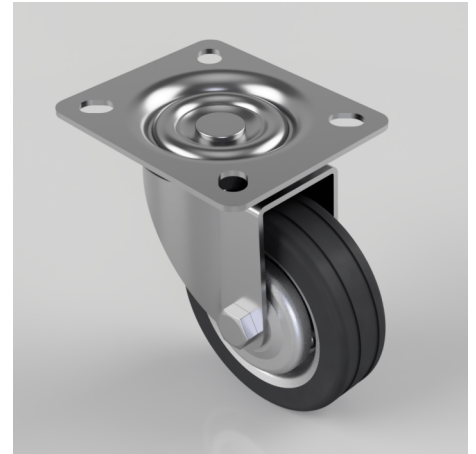


Pressed Steel Swivel Castor 75mm 40kg Load

Product code: 75RMB

Pressed steel swivel castor with a top plate fixing fitted with black rubber tyred on pressed steel centred wheel with a roller bearing Bore. Wheel diameter 75mm, tread width 22mm, overall height 97mm, top plate 84mm x 72mm, hole centres 62mm x 50mm. Load capacity 40kg.



Diameter (mm)	75
Castor Type	Swivel
Fixing Option	Plate
Height (mm)	97
Wheel Material	Rubber on Steel
Bearing Type	Roller
Load Capacity (kg)	40
Tread (mm)	22
Plate Size (mm)	84 x 72
Hole Centres (mm)	62 x 50
Swivel Radius (mm)	65
Colour / Shore Hardness	Black Rubber on Steel Rim / 85 Shore A
Fork Thickness (mm)	2
Temperature Resistance	-20 °C TO +60 °C
To Suit Fixing Bolt (mm)	8
Top Plate Thickness (mm)	2

BIL GROUP LTD

Porte Marsh Road, Calne, Wiltshire, SN11 9BW

Registered in England No: 2603821

VAT Reg: GB572705729

