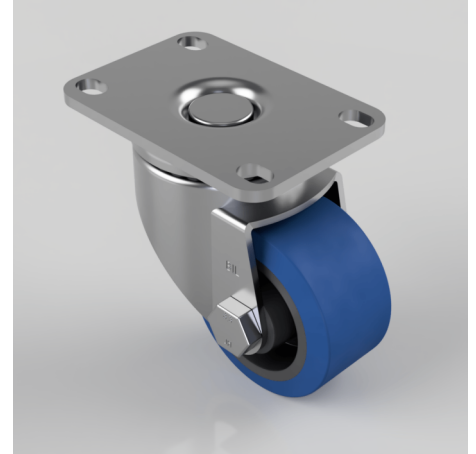


## Rubber Plate Swivel Castor 65mm 100kg Load

**Product code: BZLR65SRN**

Pressed steel swivel castor with a top plate fixing fitted with a 65 Shore A blue elastic rubber wheel, nylon centre with plain bore. Wheel diameter 63mm, tread width 35mm, overall height 91mm, plate size 92mm x 64mm, hole centres 78/71mm x 45mm. Load capacity 100kg.



Fixing Option	Plate
Castor Type	Swivel
Load Capacity (kg)	100
Wheel Material	Rubber on Nylon
Diameter (mm)	65
Bearing Type	Plain
Tread (mm)	35
Height (mm)	91
Swivel Radius (mm)	64
Colour / Shore Hardness	Blue Elastic Rubber on Nylon Rim / 65 Shore A
Plate Size (mm)	92 x 64
Hole Centres (mm)	71/78 x 45
Top Plate Thickness (mm)	4
Fork Thickness (mm)	2.5
Fixing Bolt (mm)	8
Temperature Resistance	-30 °C TO +80 °C

## BIL GROUP LTD

Porte Marsh Road, Calne, Wiltshire, SN11 9BW

Registered in England No: 2603821

VAT Reg: GB572705729

