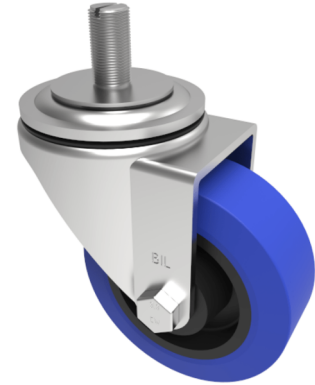


Rubber Stem Swivel Castor 100mm 250kg Load

Product code: BZH100RNBST

Pressed steel swivel castor fitted with a blue 75 shore A elastic rubber tyre on black nylon centred wheel with a roller bearing and fitted 16mm x 30mm threaded stem. Wheel diameter 100mm, tread width 38mm, overall height 128mm. Load capacity 250kg.



Diameter (mm)	100
Castor Type	Swivel
Fixing Option	Stem
Height (mm)	128
Wheel Material	Rubber on Nylon
Colour / Shore Hardness	Blue Rubber on Nylon Rim / 75 Shore A
Temperature Resistance	-20 °C TO +60 °C
Bearing Type	Roller
Load Capacity (kg)	250
Tread (mm)	38
Swivel Radius (mm)	90
Head Dia (mm)	76
To Suit Fixing Bolt (mm)	M16 X 30