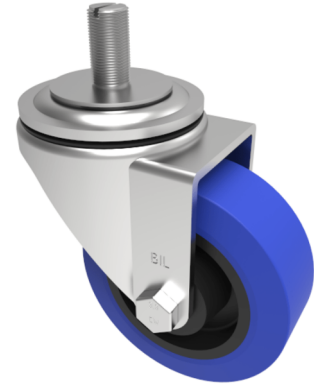


## Rubber Stem Swivel Castor 125mm 250kg Load

**Product code: BZH125RNBST**

Pressed steel swivel castor with a 16mm x 30mm stem fixing fitted with a blue 75 shore A elastic rubber tyre on a black nylon centered wheel with a roller bearing. Wheel diameter 125mm, tread width 40mm, overall height 156mm. Load capacity 250kg.



Diameter (mm)	125
Castor Type	Swivel
Fixing Option	Stem
Height (mm)	155
Wheel Material	Rubber on Nylon
Colour / Shore Hardness	Blue Rubber on Nylon Rim / 75 Shore A
Temperature Resistance	-20 °C TO +60 °C
Bearing Type	Roller
Load Capacity (kg)	250
Tread (mm)	36
Swivel Radius (mm)	104
Head Dia (mm)	76
To Suit Fixing Bolt (mm)	M16 X 30