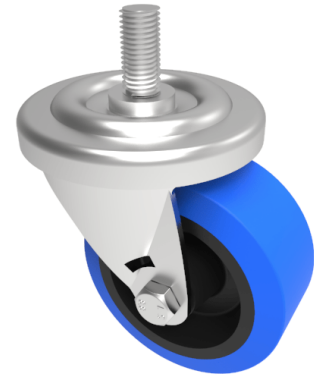


Rubber Stem Swivel Castor 75mm 125kg Load

Product code: BZH75SRNM12X25

Pressed steel swivel castor with a 12mm x 25mm threaded stem fitted with a 65 shore A blue elastic rubber tyre on black nylon centred wheel. Wheel diameter 75mm, tread width 35mm, overall height 95mm. Load capacity 125kg. REACH compliant also PAH-Free rubber to confirm to EU-directive 2005/69/EC



Diameter (mm)	75
Castor Type	Swivel
Fixing Option	Stem
Height (mm)	95
Wheel Material	Rubber on Nylon
Colour / Shore Hardness	Blue Elastic Rubber on Nylon Rim / 65 Shore A
Temperature Resistance	-30 °C TO +80 °C
Bearing Type	Plain
Load Capacity (kg)	125
Tread (mm)	35
Swivel Radius (mm)	60
Head Dia (mm)	76
To Suit Fixing Bolt (mm)	M12 X 25

BIL GROUP LTD

Porte Marsh Road, Calne, Wiltshire, SN11 9BW

Registered in England No: 2603821

VAT Reg: GB572705729

